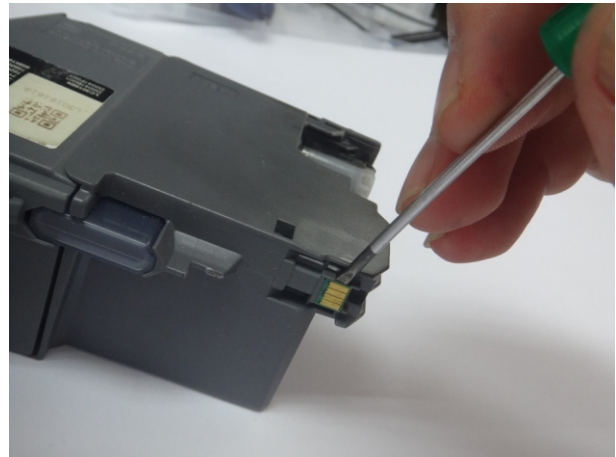
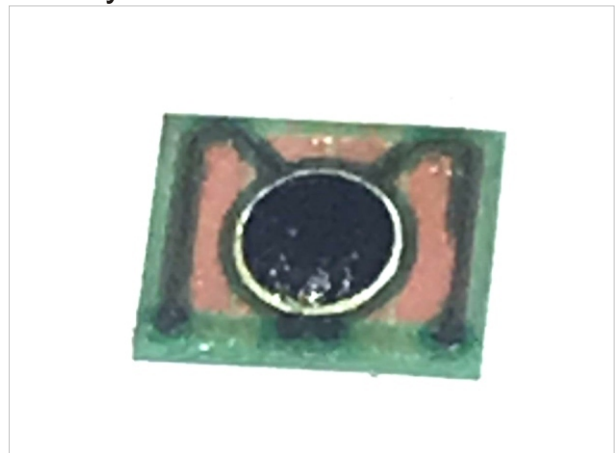
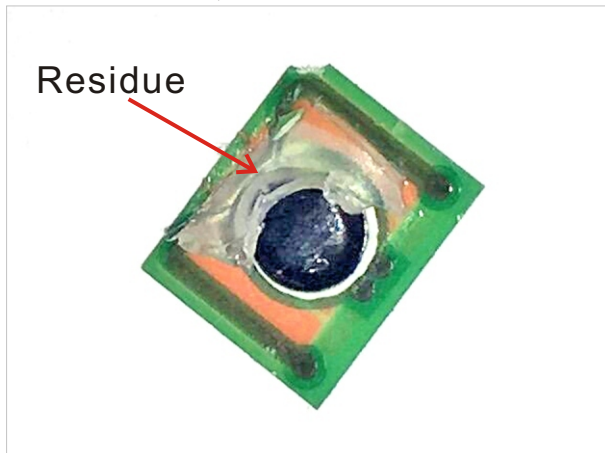


Remove the OEM chip and reinstalled

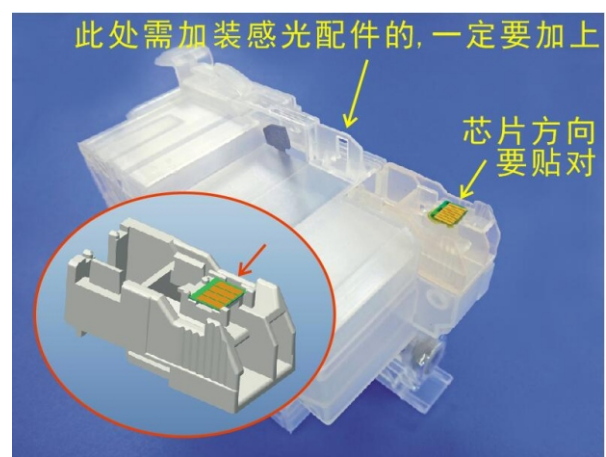
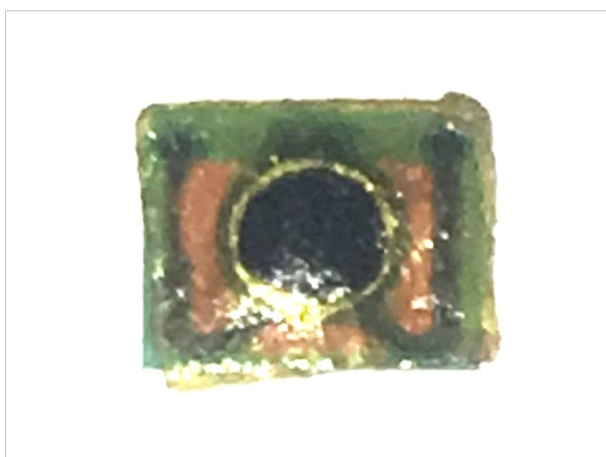
Tools: the screwdriver ("-" type)



1-2: use the screwdriver gently tilted one side first, stop when you feel it loose, and then use the same ways to handel the other side.



3-4. you can see it have some residue on the chip when you teardown so must be make it clear, but don't broken the chip.



5. stick the double-sided adhesive on the chip 6. stick the chip on the position as show

Note: if the printer can not recognize cartridges, you can use below ways:

1: take out the cartridges and close the cover

2: shut off the power

3: turn on the printer

4: inster the cartridges and close the cover is ok